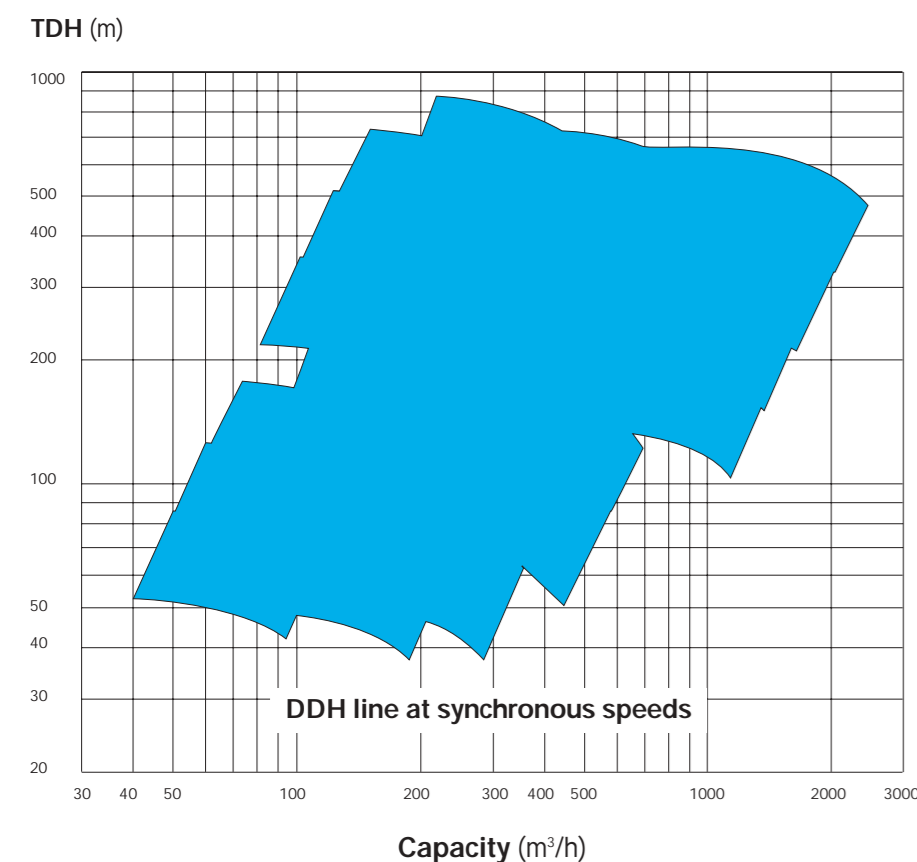
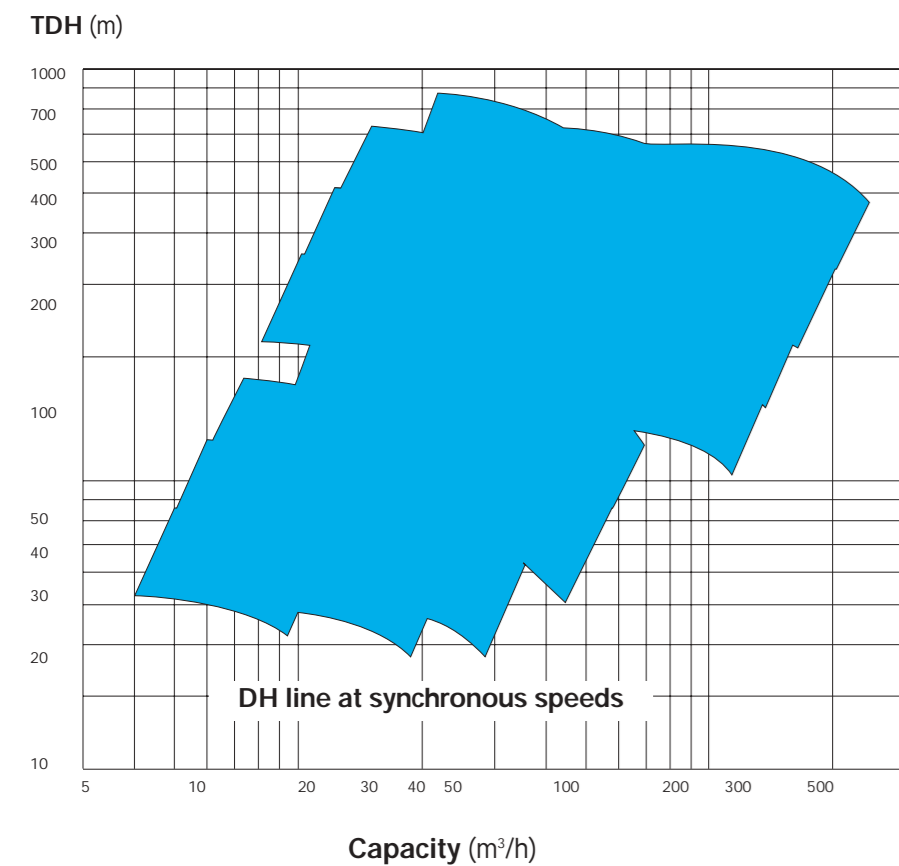
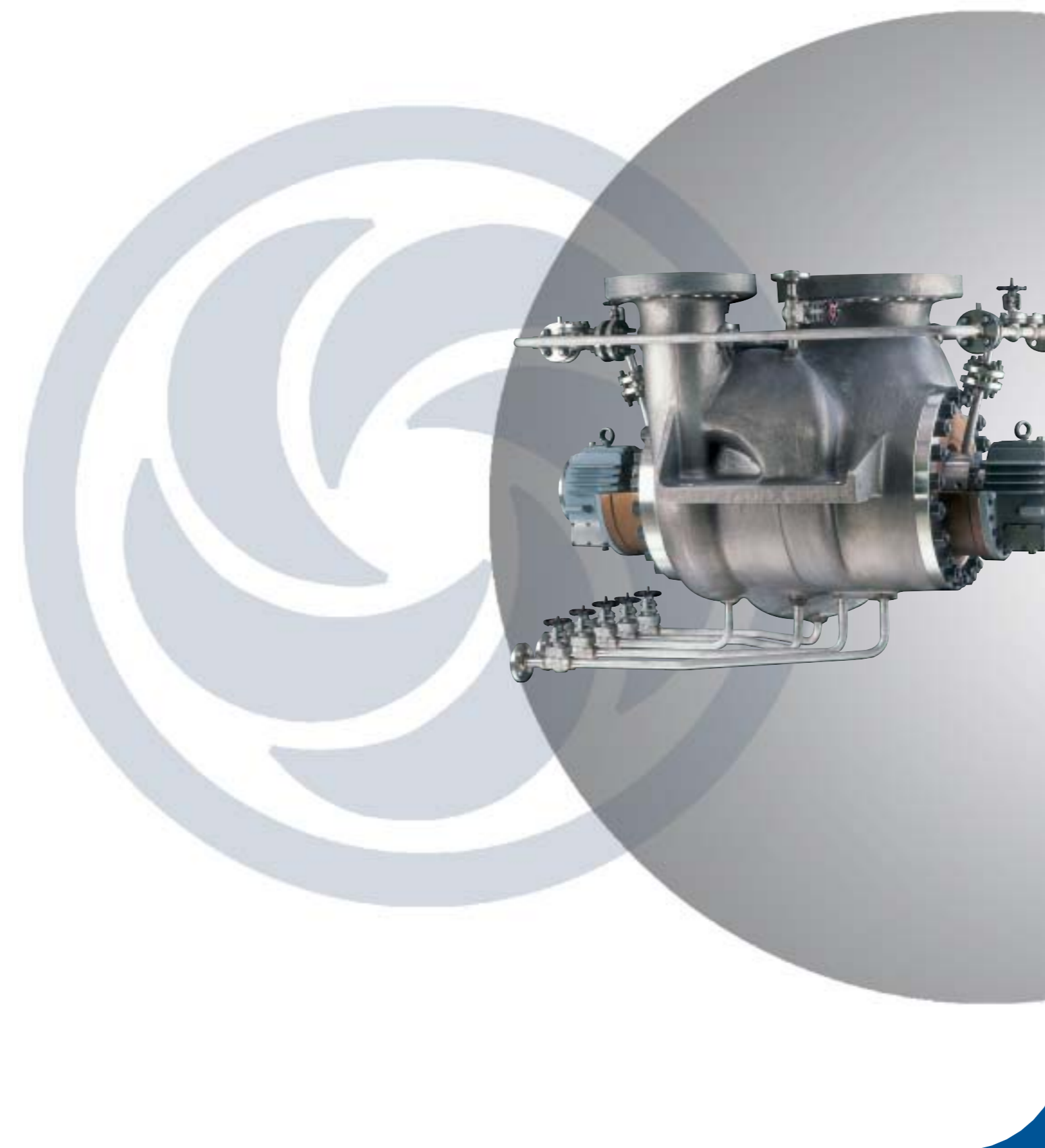


Coverage chart



A century of experience

Since the foundation of the company in 1897, Pompe Gabbioneta has been engaged in design and manufacture of high quality centrifugal pumps. The products and the markets served progressively changed from water to chemical industry and finally, in the last thirty years, to API 610 heavy duty pumps for refinery and petrochemical industries. The product development is based on a thorough interchange of marketing and operating experience within the company and in close cooperation with project and plant engineers. The manufacturing is made in a factory equipped with several modern cnc machines and machine tools, special note has to be given to the machining centers where pump casings can be machined completely with only two settings. In house facilities are designed to meet the performance and NPSH testing requirements of all pumps manufactured in the company in full compliance with API 610 standards. A quality assurance system certified in accordance with ISO 9001 is granting the achievement of highest quality for manufactured pumps.



DH/DDH LINE

DH/DDH LINE

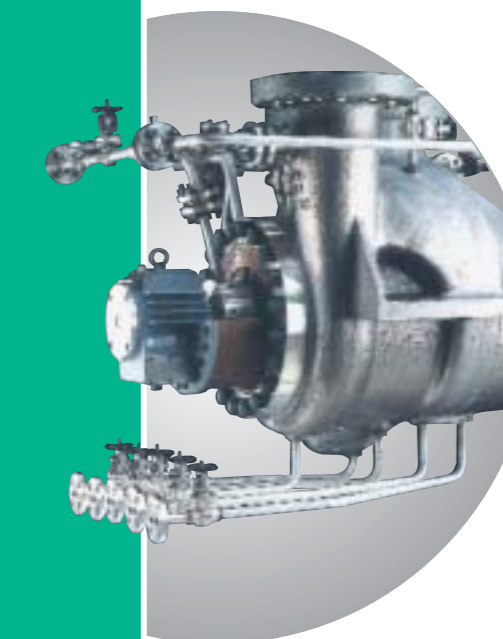
General informations

The DH and DDH line pumps are horizontal, two stage between bearings with a radial split casing. Single (DH line) or double (DDH line) suction impellers are fully designed according to latest edition of API 610 std.

A wide range of sizes and material combinations complete the variety of the offered product.

Main design features, are:

- DH pumps, with two single suction back to back impellers, to ensure the adequate axial thrust balance.
- DDH pumps, with a double suction 1st. stage impeller, balanced by means of back wear ring on the 2nd stage impeller.
- Suction and discharge nozzles, integrally cast with the casing, are normally arranged in top-top position, but side-top or side-side nozzle arrangements are available.
- Ample balancing line from 2nd. stage to suction maintain stuffing box pressures within limits easily acceptable by any type of balanced mechanical seals.
- Centerline casing mounting for high temperature stability.
- Stiff shaft design. Rotor operates below 1st critical speed.
- Deep stuffing boxes designed in accordance to API 682 Std., suitable to accept any type of mechanical or packing seals.
- Labyrinths and deflectors at either bearing housing to maximise protection against dirt.
- Three bearings arrangements available:
 1. Ball Radial / Ball Thrust
 2. Sleeve Radial / Ball Thrust
 3. Sleeve Radial / Tilting Pads Thrust (Kingsbury Type).



Main pumps applications refer to heavy duties on:

- fluid transport
- refineries
- petrochemical plants
- "hot" charge



Registered Office: Viale Gramsci 79
Headquarters: Viale Castagli 68
20099 Sesto San Giovanni MI Italy
Telephone +39 02.241001 r.a.
Telefax +39 02.2424550

e-mail: pompe.gabbioneta@pompegabbioneta.com
http://www.pompegabbioneta.com
R.L. MI n.° 90297/1999 REA MI n.° 1584044
Codice Fiscale 12759010155
Partita IVA - VAT IT 02894200969

POMPE GABBIONETA Inc.
17 South Briar Hollow Ln., Ste 207
Houston Texas 77027
Telephone 001.713.3554900
Telefax 001.713.3556200
e-mail: wcal20@aol.com



SO1 Cert n° 0194
UNI EN ISO 9001/94



Design variations

The following pump designs can be provided:

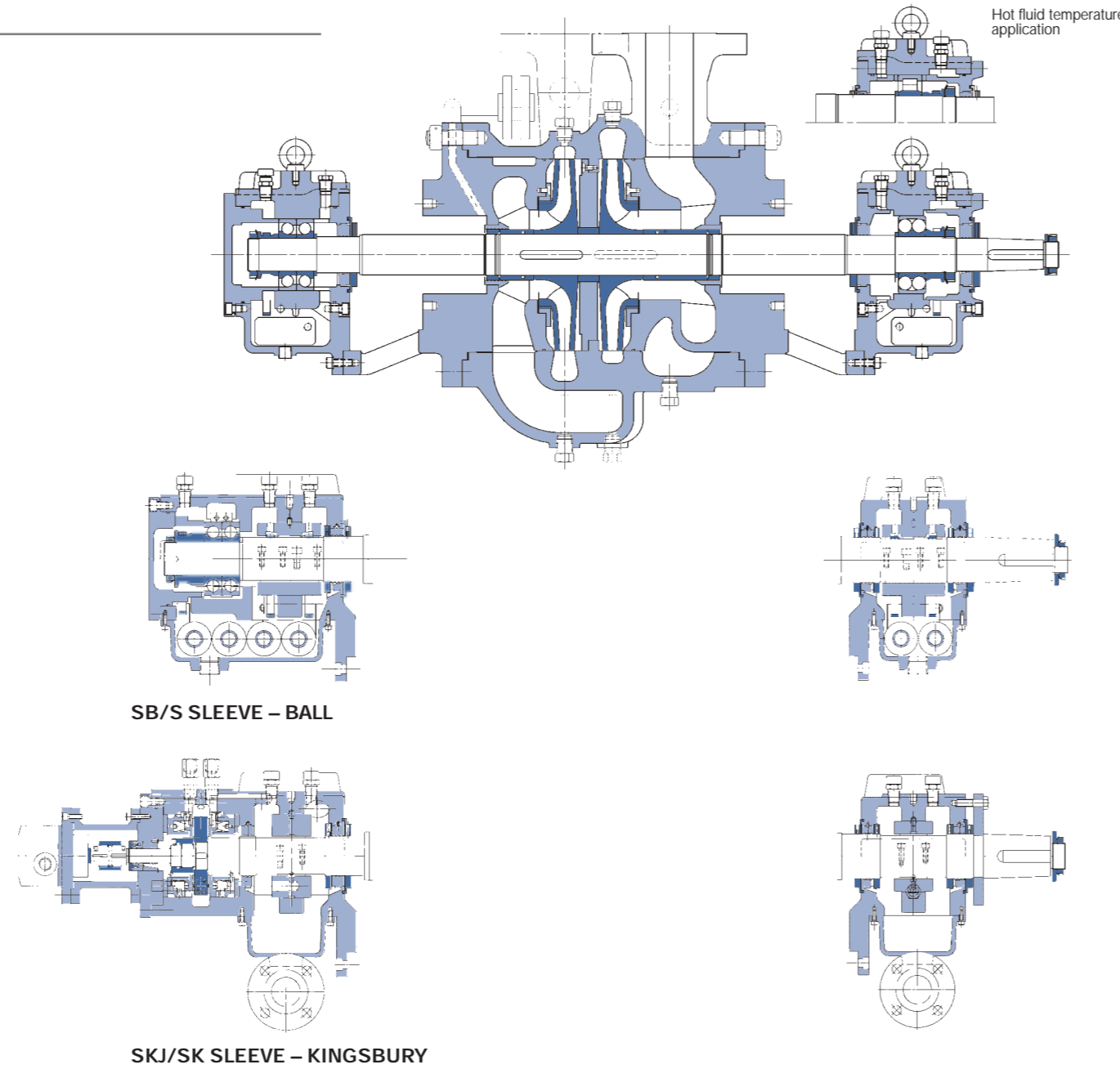
- For extremely low NPSH duties, a number of DH and DDH pumps can be equipped with inducers.
- Steam jacketed casing for special applications.
- Replaceable stuffing box cooling or heating jackets.
- Double shaft extension.
- Cylindrical fit at coupling shaft end.
- Special bearing isolators at either bearing housing ends.
- Roller, "CARB" or hydrodynamic line bearing for high temperature application.
- Oil mist lubrication system (pure or purge).
- Forced feed lubrication system.
- Temperature and/or vibration detection and monitoring equipment.

Operating data

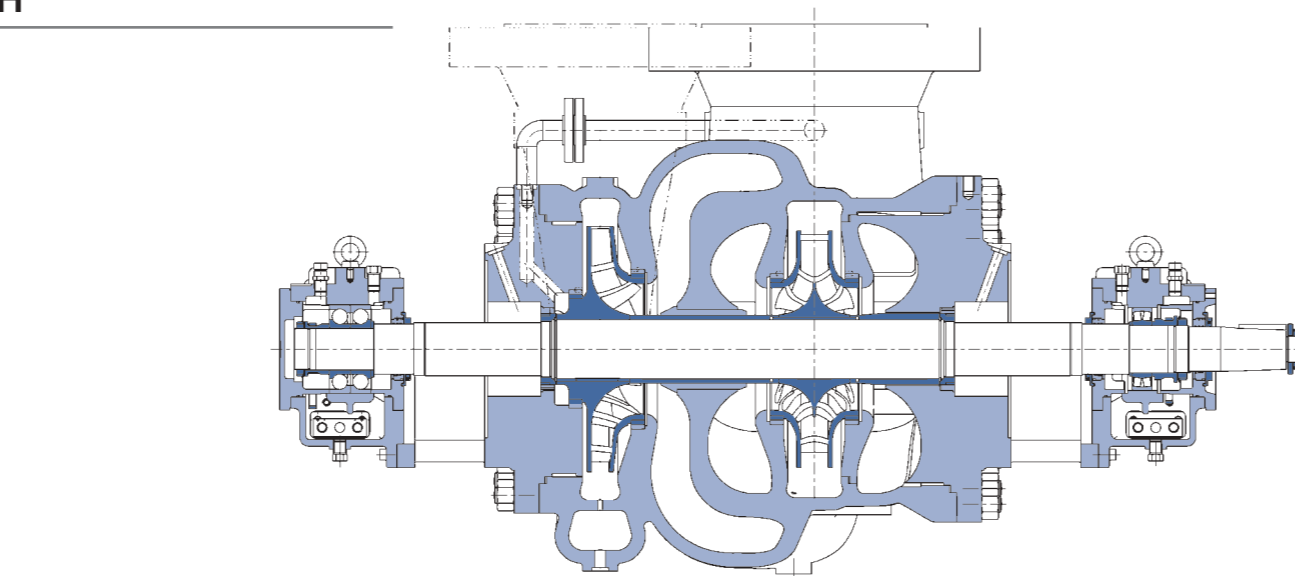
| | | | |
|--------------------------------|-------|------------------------|------------------|
| Capacities | up to | 1800 m ³ /h | (8000 Gpm) |
| Heads | up to | 760 m | (2500 Feet) |
| Temperatures | from | - 30°C (-20°F) | to 455°C (850°F) |
| Design working pressure | up to | 210 barg | (3000 Psig) |
| Hydrotest pressure | up to | 305 barg | (4500 Psig) |
| Rotational speed | up to | 4000 Rpm | |



DH

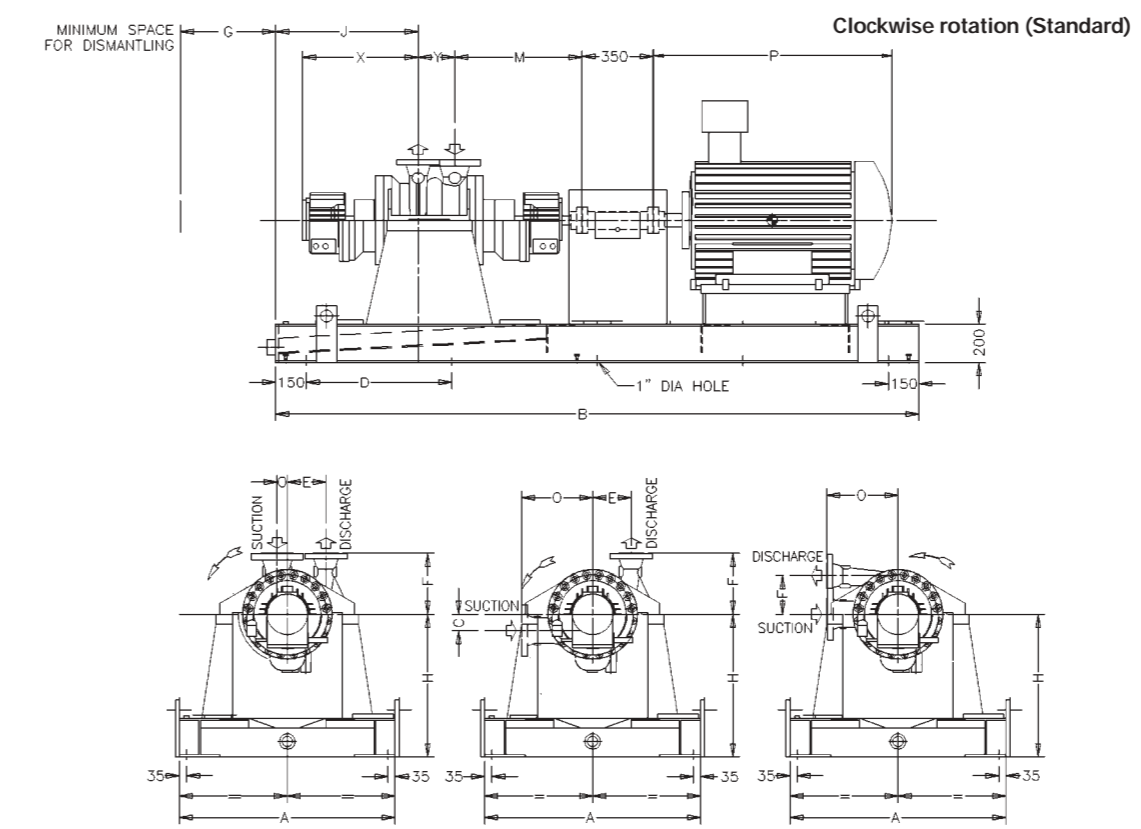


DDH



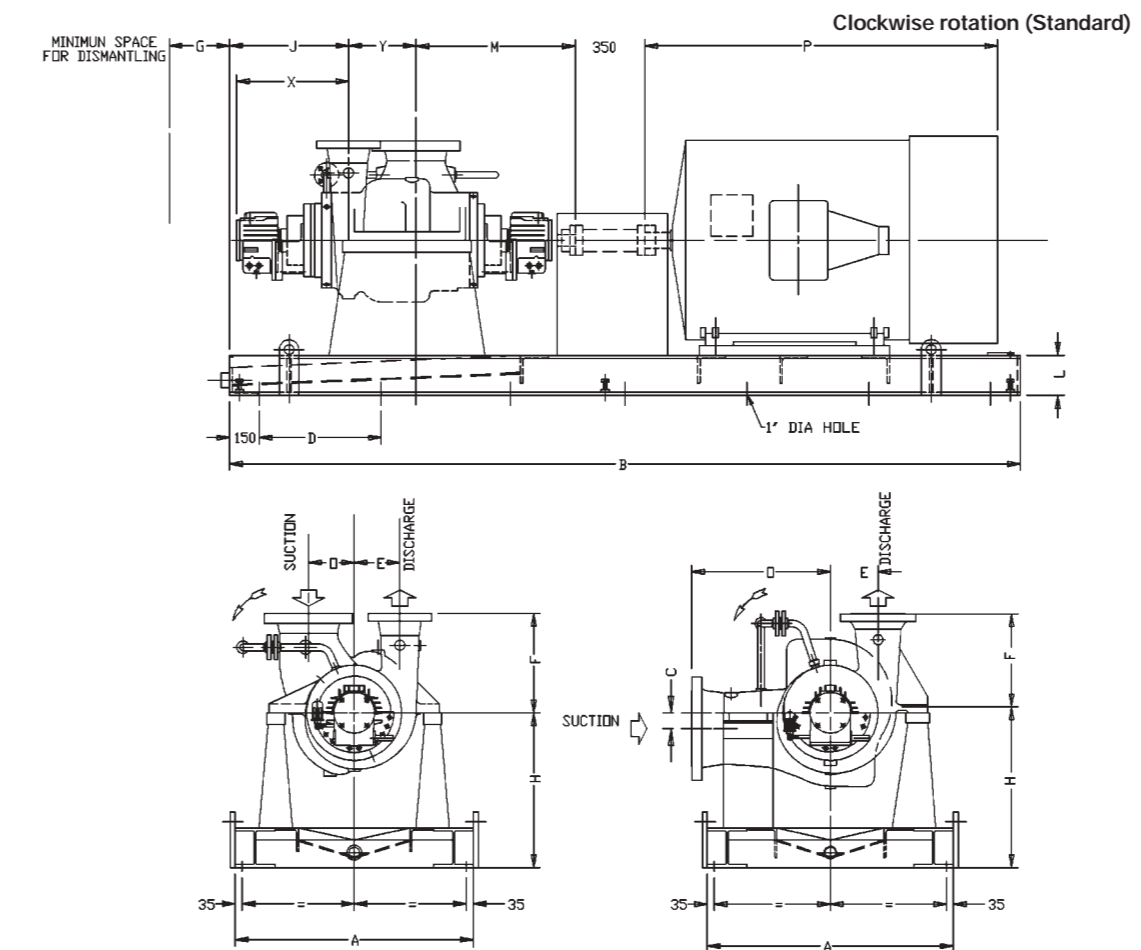
- General notes**
1. All dimensions are in mm. Do not use for construction unless certified.
 2. TT, ST respectively means top-top, side top.
 3. Dimensions B and P vary with driver selection.
 4. Dimensions X relative to Sleeve-Kingsbury configuration do not include the coaxial lube oil pump.

DH Line overall dimensions



- General notes**
1. All dimensions are in mm. Do not use for construction unless certified.
 2. TT, ST respectively means top-top, side top.
 3. Dimensions B and P vary with driver selection.
 4. Dimensions X relative to Sleeve-Kingsbury configuration do not include the coaxial lube oil pump.

DDH Line overall dimensions



| Pump type | nozzle size suct. disch. | A | C | D | E | F | G | H | X | | | Y | M | O | J |
|----------------|-------------------------------|------|-----|-----|-----|-----|------|-----|-----------|-------------|------------------|-----|-----|-----|-----|
| | | | | | | | | | ball ball | sleeve ball | sleeve kingsbury | | | | |
| DH LINE | | | | | | | | | | | | | | | |
| 300/25 TT | 3" 2" | 1060 | — | 715 | 175 | 300 | 1100 | 700 | 527 | 651 | 671 | 140 | 606 | — | 800 |
| 300/25 SS | 3" 2" | 1060 | — | 715 | — | 175 | 1100 | 700 | 527 | 651 | 671 | 140 | 606 | 300 | 800 |
| 320/50 TT | 3" 2" | 1060 | — | 715 | 175 | 300 | 1100 | 700 | 527 | 651 | 671 | 140 | 606 | — | 800 |
| 320/80 TT | 4" 3" | 1060 | — | 715 | 190 | 300 | 1100 | 700 | 565 | 689 | 709 | 180 | 626 | — | 800 |
| 320/100 TT | 6" 4" | 1060 | — | 715 | 200 | 370 | 1100 | 700 | 568 | 692 | 712 | 205 | 601 | 127 | 800 |
| 330/25 TT | 3" 2" | 1060 | — | 715 | 175 | 330 | 1100 | 700 | 527 | 651 | 671 | 140 | 606 | — | 800 |
| 360/50 TT | 3" 2" | 1060 | — | 715 | 190 | 350 | 1100 | 700 | 527 | 651 | 671 | 140 | 606 | — | 800 |
| 360/50 SS | 3" 2" | 1060 | — | 715 | — | 190 | 1100 | 700 | 527 | 651 | 671 | 140 | 606 | 350 | 800 |
| 360/80 TT | 4" 3" | 1060 | — | 715 | 200 | 350 | 1100 | 700 | 568 | 692 | 712 | 180 | 626 | — | 800 |
| 360/80 ST | 6" 3" | 1060 | — | 715 | 200 | 350 | 1100 | 700 | 568 | 692 | 712 | 180 | 626 | 420 | 800 |
| 360/100 ST | 6" 4" | 1060 | 120 | 715 | 210 | 350 | 1100 | 700 | 624 | 748 | 768 | 255 | 633 | 500 | 800 |
| 360/150 TT | 8" 6" | 1060 | — | 715 | 210 | 400 | 1100 | 700 | 642 | 766 | 786 | 305 | 611 | 120 | 800 |
| 360/150 TT | 8" 6" | 1060 | 120 | 715 | 210 | 400 | 1100 | 700 | 646 | 770 | 790 | 305 | 615 | 500 | 800 |
| 400/50 TT | 4" 2" | 1060 | — | 715 | 230 | 380 | 1100 | 700 | 559 | 683 | 703 | 190 | 607 | — | 800 |
| 400/50 SS | 4" 2" | 1060 | — | 715 | — | 230 | 1100 | 700 | 559 | 683 | 703 | 190 | 607 | 380 | 800 |
| 400/80 TT | 4" 3" | 1240 | — | 715 | 240 | 400 | 1100 | 700 | 580 | 704 | 724 | 180 | 626 | — | 800 |
| 400/100 TT | 6" 4" | 1240 | — | 715 | 230 | 400 | 1100 | 700 | 639 | 763 | 783 | 215 | 658 | 120 | 800 |
| 400/150 TT | 8" 6" | 1240 | — | 715 | 245 | 450 | 1100 | 700 | 569 | 693 | 713 | 205 | 631 | 175 | 800 |

| Pump type | nozzle size suct. disch. | A | C | D | E | F | G | H | X | | | Y | M | O | J | L |
|-----------------|-------------------------------|------|-----|-----|-----|-----|------|------|-----------|-------------|------------------|-----|------|-----|-----|-----|
| | | | | | | | | | ball ball | sleeve ball | sleeve kingsbury | | | | | |
| DDH LINE | | | | | | | | | | | | | | | | |
| 360/100 TT | 8" 4" | 1240 | — | 715 | 215 | 450 | 1600 | 700 | 504 | 628 | 648 | 230 | 688 | 200 | 800 | 200 |
| 360/150 TT | 10" 6" | 1240 | — | 715 | 230 | 500 | 1600 | 700 | 529 | 653 | 673 | 340 | 788 | 230 | 800 | 200 |
| 360/200 ST | 12" 8" | 1390 | 0 | 715 | 240 | 600 | 1600 | 700 | 522 | 646 | 666 | 380 | 807 | 700 | 800 | 200 |
| 400/150 TT | 10" 6" | 1390 | — | 715 | 265 | 550 | 1600 | 700 | 539 | 663 | 683 | 340 | 778 | 250 | 800 | 200 |
| 400/150 ST | 10" 6" | 1390 | 250 | 715 | 265 | 550 | 1600 | 700 | 539 | 663 | 683 | 340 | 778 | 550 | 800 | 200 |
| 400/200 TT | 12" 8" | 1390 | — | 715 | 265 | 630 | 1600 | 700 | 509 | 633 | 653 | 380 | 774 | 300 | 800 | 200 |
| 400/200 TT | 10" 8" | 1240 | — | 715 | 250 | 550 | 1600 | 700 | 500 | 624 | 644 | 290 | 701 | 200 | 800 | 200 |
| 400/200 ST | 10" 8" | 1240 | 200 | 715 | 250 | 550 | 1600 | 700 | 500 | 624 | 644 | 290 | 701 | 550 | 800 | 200 |
| 400/250 TT | 12" 10" | 1390 | — | 715 | 300 | 550 | 1800 | 700 | 541 | 665 | 685 | 362 | 822 | 300 | 800 | 200 |
| 500/150 TT | 10" 6" | 1390 | — | 715 | 325 | 550 | 1600 | 800 | 516 | 640 | 660 | 310 | 730 | 200 | 800 | 200 |
| 550/250 TT | 14" 10" | 1700 | — | 715 | 400 | 700 | 1800 | 900 | 583 | 707 | 727 | 440 | 868 | 350 | 800 | 200 |
| 800/300 TT | 16" 12" | 2000 | — | 715 | 500 | 800 | 2300 | 1000 | 648 | 772 | 792 | 600 | 1012 | 500 | 900 | 240 |