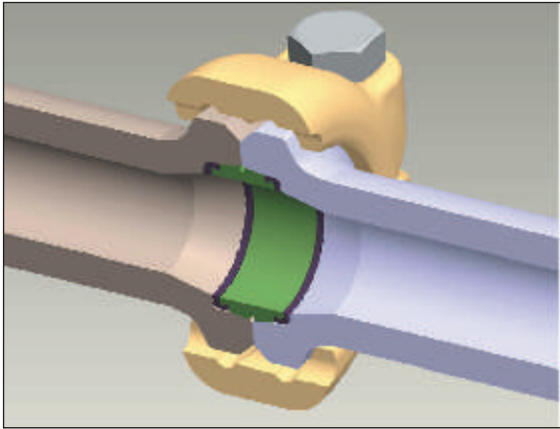




Safety Iron™ Manifold Trailer

Weir SPM's Safety Iron™ Manifold Trailer provides the market with a unique trailer design that utilizes field proven, robust Safety Iron™ flow control products in an ideal semi-permanent application. The flexible design features of this trailer, along with the reliability of the high pressure Safety Iron™ connections, results in a durable manifold designed to increase safety and operating efficiency during fracturing operations.





Weir SPM allows customers to select from numerous design options to better personalize their product.

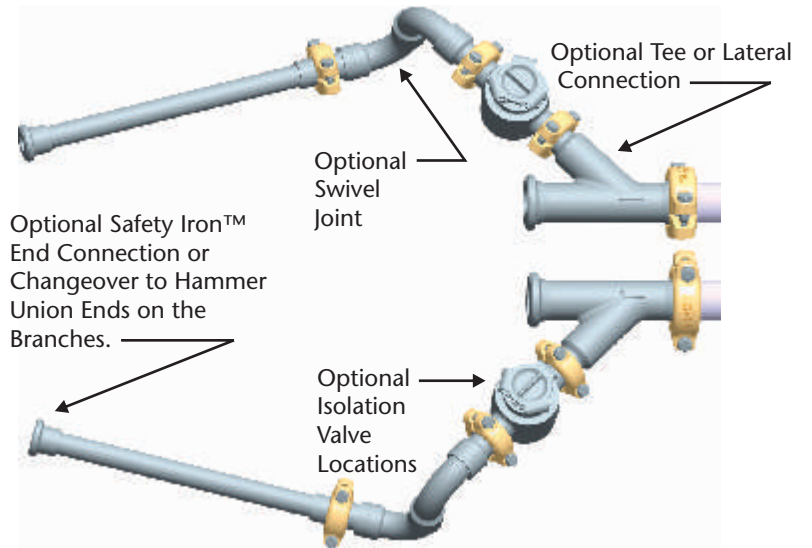
Weir SPM's Safety Iron™ connections provide a more reliable seal with increased vibration resistance when compared to traditional hammer union connections.



Manifold Trailer Optional Components & Configurations

Product Features:

- Multiple designs allow for increased variability in flow rate, and inlet/outlet configuration.
- Greater vibration resistance compared to traditional hammer union alternatives.
- Large sweeping radii in high pressure components for increased strength at connections.
- More robust wall thickness to prevent failure in high risk areas.
- Built in coiled-cable suspension for high pressure component mounting increases flexibility and reduces risk of cracks.
- Isolation valves available for fluid velocity control.
- Available with crossovers at high pressure outlets for easy compatibility with existing inventories.
- DOT certified trailer.



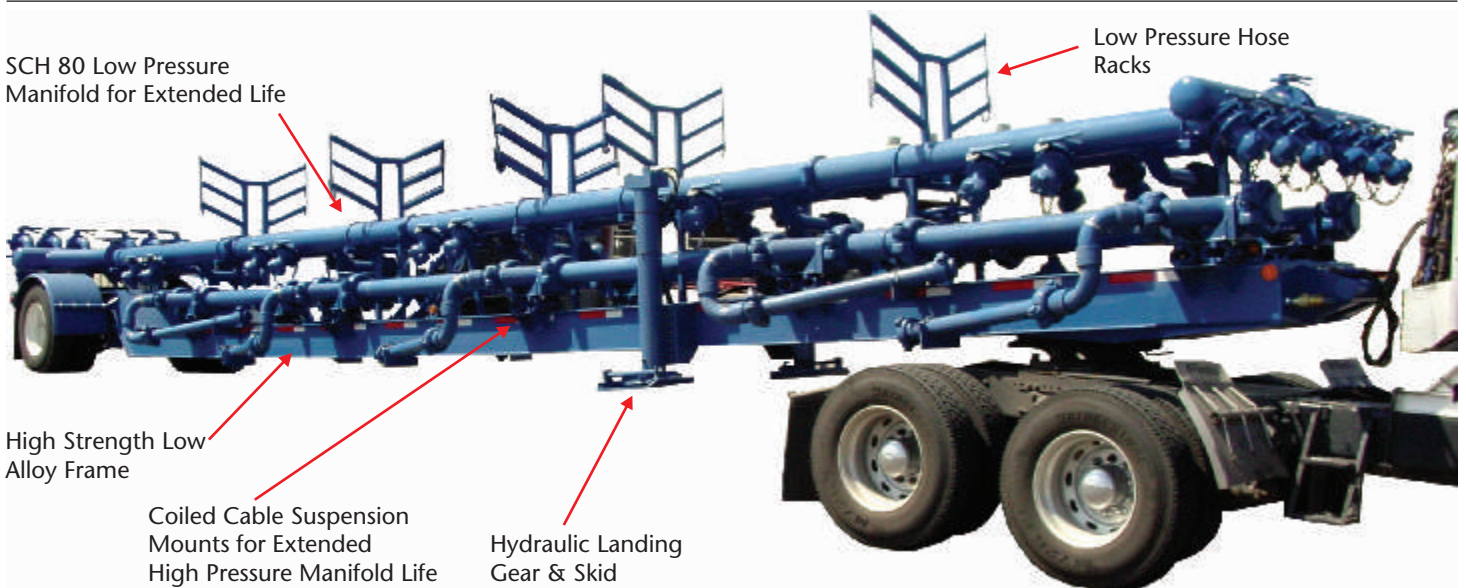
SCH 80 Low Pressure Manifold for Extended Life

High Strength Low Alloy Frame

Coiled Cable Suspension Mounts for Extended High Pressure Manifold Life

Hydraulic Landing Gear & Skid

Low Pressure Hose Racks



Weir SPM

7601 Wyatt Drive
Fort Worth
TX 76108
USA

Tel: (817) 246 2461
Fax (817) 246 6324

www.weiroilandgas.com

