



Plug Valves

Excellent
Oil & Gas
Solutions



Weir SPM offers a complete line of high-pressure plug valves, ranging from 1" to 4" sizes and in pressure ratings to 20,000 psi, for use in a variety of well service applications.



Weir SPM's line of plug valves provide superior performance in flow line isolation for high-pressure well service applications.

Weir SPM produces a variety of quality forged-body 1/4 turn plug valves. They are intended for high-pressure well service applications and have a proven track record of excellent field serviceability. Weir SPM forged body valves offer superior strength and durability. During the forging process the cavity that will create the plug valve chamber is formed allowing a more consistent heat control during quenching. By maximizing control over the thermal mass, heat treatment is more uniformly managed, resulting in better cross sectional hardness.

Weir SPM high pressure plug valves are tough, field-proven units that provide dependable service for applications such as cementing, fracturing, acidizing, well kill, coil tubing and sand control.

Hydraulic and pneumatic actuators are available for all sizes of plug valves, enhancing safety and convenience in the field.



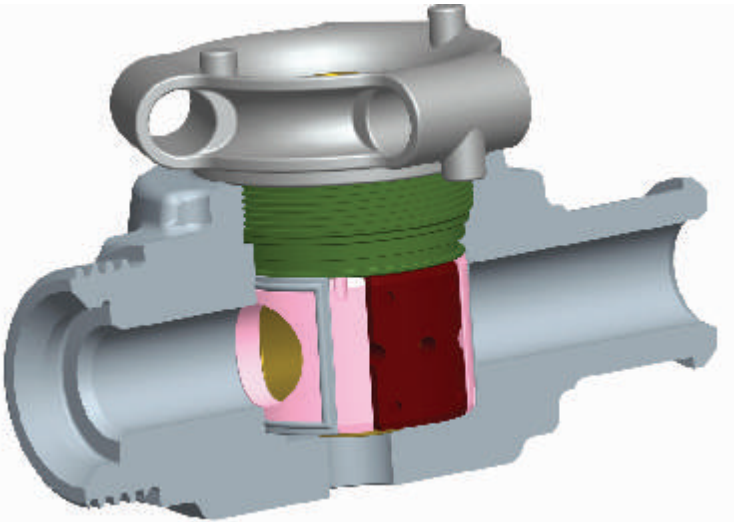
Standard, cold-temperature and sour gas service models are available.



Weir SPM plug valve part kits contain all the components necessary to rebuild valves in the field or in the shop. Weir SPM seal kits contain all items in the standard repair kit, except the plug. For proper sealing of the valve, seal segments should be replaced in pairs. Individual components and elastomer kits are also available.

Valve Model	NSCWP* (PSI)	End Connections	Size						
			1"	1" X 2"	1½"	2"	3"	4"	
SP50TF	5,000	Threaded	•			•			
SP100TF	10,000	Threaded				•			
SP150TF	15,000	Threaded			•	•			
SP150TM	15,000	Threaded		•					
SP150TMF	15,000	Threaded		•					
SP150WU	15,000	Fig. 1502	•	•	•	•	•	•	•
SP200WU	20,000	Fig. 2002				•	•		

Special models are available in 20,000 psi. *Non-Shock Cold Working Pressure



1", 1" x 2", 1½" and 2" Plug Valves

Weir SPM high pressure plug valves are tough, field proven units that provide dependable service for applications such as cementing, fracturing, acidizing, coiled tubing, and sand control.

Available in 1", 1" X 2", 1½" and 2" sizes and in pressure ratings to 15,000 psi NSCW*P, Weir SPM plug valves feature quality components throughout for greater dependability, minimum weight, and maximum strength.

Plug valves are available in standard service and sour gas service models. Special models are available to 20,000 psi. Special models are also available for torture valve applications.



Weir SPM plug valves are available in LTPL (above), hammer union, or Safety Iron™ (below) end connections.

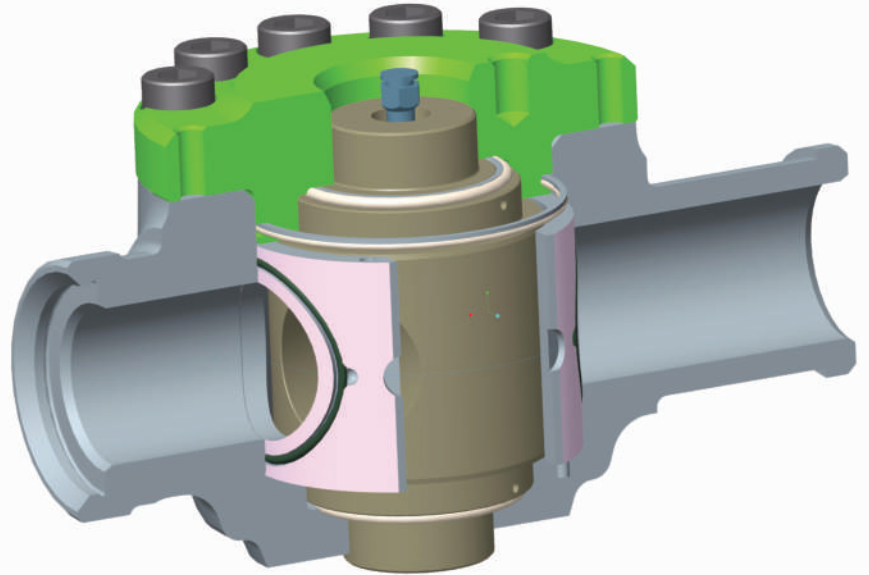


CHARACTERISTICS

- Improved body cap seal arrangement eliminates cap leakage found in some competitive valves.
- No need to remove valve from line for maintenance.
- No special tools needed for operation or maintenance.
- 1", 1" x 2", 1½" and 2" valve repair kits can be used in Weco series "D" valves.
- Precision-ground floating seal segments insure positive seal between fluid stream and cylindrical plug.
- Excellent sealing provided by precision ground metal-to-metal seal between seal segments and plug.
- Pressure-enhanced sealing between segments and body provided by molded rubber static segment seal.
- Segment design ensures easy operation up to the full working pressure of the valve.
- Precision-ground plug is plated standard for maximum corrosion protection.
- Quality components throughout unit including forged heat-treated alloy steel body for greater dependability, minimum weight and maximum strength.
- Plug bar cap has visible indication of open or closed position and detent spring to insure valve stays open or closed.
- Hydraulically-actuated models optional.
- Remote-control actuator available.
- Each valve is thoroughly tested prior to shipment.
- Inventory stock of complete valves, spare parts and seal kits available.

3" and 4" Plug Valves

Weir SPM three-inch and four-inch plug valves are available in pressure ratings to 20,000 psi NSCWP*. Features include a flanged body for easier maintenance, integral inlets and outlets, hand crank, locked-open and shut gear drive standard, and multiple lubricating inlets. Standard service and sour gas service models are available.



CHARACTERISTICS

- Low operating torque due to balanced stem makes valve easier to operate.
- Flanged body for easier maintenance.
- Integral inlets and outlets are standard.
- Quality components throughout unit including forged steel body.
- Hand crank, and locked-open and shut gear drive is standard.
- Hydraulic and pneumatic actuators with either a 12-volt power system or hand-operated hydraulic pump are optional.
- New manual actuated design now available.
- Cylindrical balanced plug utilizes sealing segments to permit easier operation under pressure, and assure positive seal.
- Flanged body construction in lieu of top threaded cap for safer operation and easier maintenance.
- No adjustments or special tools needed for maintenance or operation.
- Visible quarter-turn stop indicates when the valve is open or fully closed.



Weir SPM's newest plug valve offering is the 3" SP150 Manual Actuated Plug Valve.

Weir SPM

7601 Wyatt Drive
Fort Worth
TX 76108
USA

Tel: (817) 246 2461
Fax (817) 246 6324

www.weiroilandgas.com

