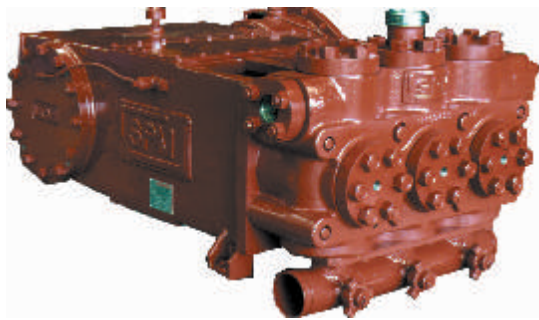




TWS 250



APPLICATIONS: Coiled tubing, snubbing, hot oil, reverse circulation.

Rated Max. Brake HP.....250 BHP (186 Kw)
 Maximum Rod Load.....50,000 Lbs. (22,680 kg)
 Stroke Length.....5" (127 mm)
 Gear Ratio.....4.44:1

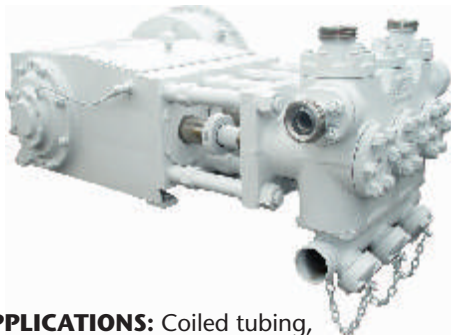
TWS 250 Performance Data ^{1, 2}

PLUNGER DIAMETER	OUTPUT PER REV	DISPLACEMENT AT PUMP STROKES PER MINUTE / PINION RPM									
		65 / 289		115 / 511		200 / 888		300 / 1332		473 / 2100	
in (mm)	gal/rev (liter/rev)	gpm (lpm)	psi (kg/cm ²)	gpm (lpm)	psi (kg/cm ²)	gpm (lpm)	psi (kg/cm ²)	gpm (lpm)	psi (kg/cm ²)	gpm (lpm)	psi (kg/cm ²)
2 (50.8)	.204 (0.8)	13 (49)	15,915 (1119)	23 (87)	15,915 (1119)	41 (155)	9,409 (661)	61 (231)	6,324 (445)	96 (363)	4,018 (282)
2-1/4 (57.2)	.258 (1.0)	17 (64)	12,575 (884)	30 (114)	12,575 (884)	52 (197)	7,418 (521)	77 (291)	5,010 (352)	122 (462)	3,162 (222)
2-1/2 (63.5)	.319 (1.2)	21 (79)	10,186 (716)	37 (140)	10,186 (716)	64 (242)	6,027 (424)	96 (363)	4,018 (282)	151 (572)	2,555 (180)
2-3/4 (69.9)	.386 (1.5)	25 (95)	8,418 (592)	44 (167)	8,418 (592)	77 (291)	5,010 (352)	116 (439)	3,325 (234)	183 (693)	2,108 (148)
3 (76.2)	.459 (1.7)	30 (114)	7,074 (497)	53 (201)	7,074 (497)	92 (348)	4,193 (295)	138 (196)	2,795 (196)	217 (821)	1,778 (125)
3-1/2 (88.9)	.625 (2.4)	41 (155)	5,197 (365)	72 (273)	5,197 (365)	125 (473)	3,086 (217)	188 (712)	2,052 (144)	296 (1120)	1,303 (92)
3-3/4 (95.3)	.717 (2.7)	47 (178)	4,527 (318)	82 (310)	4,527 (318)	143 (541)	2,698 (190)	215 (814)	1,794 (126)	339 (1283)	1,138 (80)
4 (101.6)	.816 (3.1)	53 (201)	3,979 (280)	94 (356)	3,979 (280)	163 (617)	2,367 (166)	245 (927)	1,574 (111)	384 (1453)	1,005 (71)
INPUT POWER: BHP (Kw)		135 (101)		235 (175)		250 (186)		250 (186)		250 (186)	

1 Based on 90% ME and 100% VE - Intermittent Service Only.
 2 For applications demanding pressures over 15,000 psi, contact Weir SPM Engineering.

Length.....59" (1,499 mm)
 Width.....45" (1,143 mm)
 Height.....26" (660 mm)
 Weight Dry (Approx.).....4,070# (1,850 kg)

TWS 400



APPLICATIONS: Coiled tubing, hot oil, snubbing, reverse circulation, cementing.

Rated Max. Brake HP.....400 BHP (298 Kw)
 Maximum Rod Load.....80,000 Lbs. (36,288 kg)
 Stroke Length.....6" (152.4 mm)
 Gear Ratio.....4.6:1

TWS 400 Performance Data ^{1, 2}

PLUNGER DIAMETER	OUTPUT PER REV	DISPLACEMENT AT PUMP STROKES PER MINUTE / PINION RPM									
		50 / 230		100 / 460		200 / 920		300 / 1380		450 / 2070	
in (mm)	gal/rev (liter/rev)	gpm (lpm)	psi (kg/cm ²)	gpm (lpm)	psi (kg/cm ²)	gpm (lpm)	psi (kg/cm ²)	gpm (lpm)	psi (kg/cm ²)	gpm (lpm)	psi (kg/cm ²)
2 1/2 (63.5)	.38 (1.4)	19 (72)	16,305 (1146)	38 (144)	16,305 (1146)	76 (288)	8,120 (571)	114 (431)	5,415 (381)	171 (647)	3,610 (254)
2 3/4 (69.9)	.46 (1.7)	23 (87)	13,475 (947)	46 (174)	13,475 (947)	92 (348)	6,705 (471)	138 (522)	4,470 (314)	207 (783)	2,980 (209)
3 (76.2)	.55 (2.1)	28 (106)	11,320 (796)	55 (208)	11,320 (796)	110 (416)	5,610 (394)	165 (625)	3,740 (263)	248 (939)	2,209 (175)
3 1/2 (88.9)	.75 (2.8)	37 (140)	8,320 (585)	75 (284)	8,320 (585)	150 (568)	4,115 (289)	225 (852)	2,740 (193)	338 (1279)	1,825 (128)
4 (101.6)	.98 (3.7)	49 (185)	6,370 (448)	98 (371)	6,370 (448)	196 (742)	3,150 (221)	294 (1113)	2,100 (148)	441 (1669)	1,400 (98)
4 1/2 (114.3)	1.24 (4.7)	62 (235)	5,030 (354)	124 (469)	5,030 (354)	248 (939)	2,485 (175)	372 (1408)	1,660 (117)	558 (2112)	1,105 (78)
INPUT POWER: BHP (Kw)		203 (151)		400 (298)		400 (298)		400 (298)		400 (298)	

1 Based on 90% ME and 100% VE - Intermittent Service Only.
 2 For applications demanding pressures over 15,000 psi, contact Weir SPM Engineering.

Length.....71-1/4" (1,810 mm)
 Width.....75-3/8" (1,913 mm)
 Height.....26-1/2" (674 mm)
 Weight Dry (Approx.).....4,500# (2,041 kg)

TWS 500 LW



APPLICATIONS: Coiled tubing, reverse circulation, snubbing, acidizing, cementing, gravel packing.

Rated Max. Brake HP.....500 BHP (373 Kw)
 Maximum Rod Load.....100,000 Lbs. (43,360 kg)
 Stroke Length.....6" (152.4 mm)
 Gear Ratio.....4.6:1

TWS 500 LW Performance Data ^{1, 2}

PLUNGER DIAMETER	OUTPUT PER REV	DISPLACEMENT AT PUMP STROKES PER MINUTE / PINION RPM									
		50 / 230		100 / 460		200 / 920		300 / 1380		450 / 2070	
in (mm)	gal/rev (liter/rev)	gpm (lpm)	psi (kg/cm ²)	gpm (lpm)	psi (kg/cm ²)	gpm (lpm)	psi (kg/cm ²)	gpm (lpm)	psi (kg/cm ²)	gpm (lpm)	psi (kg/cm ²)
2 1/4 (69.9)	.46 (1.7)	23 (87)	16,845 (1184)	46 (174)	16,845 (1184)	92 (348)	8,385 (589)	138 (522)	5,590 (393)	207 (783)	3,725 (262)
3 (76.2)	.55 (2.1)	28 (106)	14,155 (995)	55 (208)	14,155 (995)	110 (416)	7,015 (493)	165 (625)	4,675 (329)	248 (939)	2,119 (150)
3 1/2 (88.9)	.75 (2.8)	37 (140)	10,400 (731)	75 (284)	10,400 (731)	150 (568)	5,145 (362)	225 (852)	3,430 (241)	338 (1279)	2,280 (160)
4 (101.6)	.98 (3.7)	49 (185)	7,960 (560)	98 (371)	7,960 (560)	196 (742)	3,935 (277)	294 (1113)	2,625 (185)	441 (1669)	1,750 (123)
4 1/2 (114.3)	1.24 (4.7)	62 (235)	6,290 (442)	124 (469)	6,290 (442)	248 (939)	3,110 (219)	372 (1408)	2,075 (146)	558 (2112)	1,380 (97)
INPUT POWER: BHP (Kw)		253 (189)		500 (373)		500 (373)		500 (373)		500 (373)	

1 Based on 90% ME and 100% VE - Intermittent Service Only.
 2 For applications demanding pressures over 15,000 psi, contact Weir SPM Engineering.

Length.....69-11/16" (1,770 mm)
 Width.....50-7/8" (1,242 mm)
 Height.....29-3/8" (746 mm)
 Weight Dry (Approx.).....3,950# (1,792 kg)

Pump dimensions are approximate. For full detailed drawings, please contact Weir SPM Engineering.

Weir SPM



Additional Intermittent Duty Pumps

TWS 600



APPLICATIONS: Acidizing, cementing, gravel packing, snubbing.

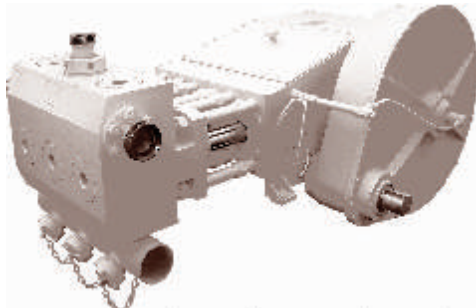
Rated Max. Brake HP.....600 BHP (447 Kw)
 Maximum Rod Load.....100,000 Lbs. (43,360 kg)
 Stroke Length.....6" (152.4 mm)
 Gear Ratio.....4.61:1
 Length.....73-1/2" (1,867 mm)
 Width.....50-7/8" (1,292 mm)

TWS 600 Performance Data ^{1, 2}

PLUNGER DIAMETER	OUTPUT PER REV	DISPLACEMENT AT PUMP STROKES PER MINUTE / PINION RPM									
		50 / 230		120 / 552		200 / 920		300 / 1380		450 / 2070	
in (mm)	gal/rev (liter/rev)	gpm (lpm)	psi (kg/cm ²)	gpm (lpm)	psi (kg/cm ²)	gpm (lpm)	psi (kg/cm ²)	gpm (lpm)	psi (kg/cm ²)	gpm (lpm)	psi (kg/cm ²)
2 1/2 (63.5)	.38 (1.4)	19 (72)	20,372 (1436)	46 (174)	20,165 (1421)	76 (290)	12,099 (853)	115 (434)	8,066 (568)	172 (651)	5,377 (379)
2 3/4 (69.9)	.46 (1.7)	23 (88)	16,845 (1186)	56 (210)	16,665 (1174)	93 (350)	9,999 (705)	139 (526)	6,666 (470)	208 (788)	4,440 (313)
3 (76.2)	.55 (2.1)	28 (104)	14,147 (997)	66 (250)	14,003 (987)	110 (417)	8,402 (592)	165 (625)	5,610 (395)	248 (938)	3,734 (263)
3 1/2 (88.9)	.75 (2.8)	37 (142)	10,394 (732)	90 (341)	10,288 (725)	150 (568)	6,173 (435)	225 (851)	4,115 (290)	337 (1277)	2,744 (193)
4 (101.6)	.98 (3.7)	49 (185)	7,958 (561)	118 (445)	7,877 (555)	196 (741)	4,726 (333)	294 (1112)	3,151 (222)	441 (1668)	2,100 (148)
4 1/2 (114.3)	1.24 (4.7)	62 (235)	6,288 (443)	149 (563)	6,224 (439)	248 (938)	3,734 (263)	372 (1407)	2,489 (175)	558 (2111)	1,660 (117)
INPUT POWER: BHP (Kw)		253 (188)		600 (448)		600 (448)		600 (448)		600 (448)	

1 Based on 90% ME and 100% VE - Intermittent Service Only.
 2 For applications demanding pressures over 15,000 psi, contact Weir SPM Engineering.
 Height.....29-3/8" (746 mm)
 Weight Dry (Approx.).....5,400# (2,449 kg)

TWS 900



APPLICATIONS: Acidizing, fracturing, frac-pack.

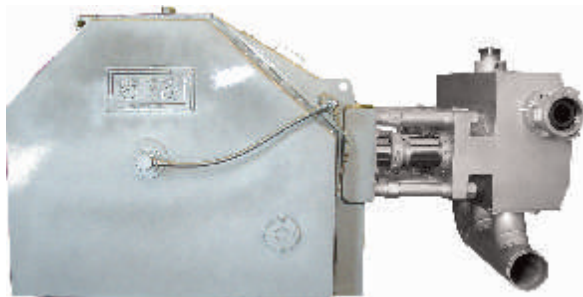
Rated Max. Brake HP.....900 BHP (671 Kw)
 Maximum Rod Load.....160,000 Lbs. (72,576 kg)
 Stroke Length.....8" (203.2 mm)
 Gear Ratio.....6.353:1
 Length.....88-3/8" (2,245 mm)
 Width.....54-1/8" (1,375 mm)

TWS 900 Performance Data ^{1, 2}

PLUNGER DIAMETER	DISPLACEMENT PER REV	DISPLACEMENT AT PUMP STROKES PER MINUTE / PINION RPM									
		50 / 318		100 / 635		200 / 1271		300 / 1906		330 / 2100	
in (mm)	gal/rev (liter/rev)	gpm (lpm)	psi (kg/cm ²)	gpm (lpm)	psi (kg/cm ²)	gpm (lpm)	psi (kg/cm ²)	gpm (lpm)	psi (kg/cm ²)	gpm (lpm)	psi (kg/cm ²)
3-3/4 (95.3)	1.15 (4.4)	58 (220)	14,490 (1019)	115 (435)	12,075 (849)	230 (871)	6,035 (424)	345 (1306)	4,025 (283)	380 (1438)	3,665 (258)
4 (101.6)	1.30 (4.9)	65 (246)	12,740 (896)	130 (492)	10,680 (751)	260 (984)	5,340 (375)	390 (1476)	3,560 (250)	429 (1624)	3,235 (227)
4-1/2 (114.3)	1.65 (6.3)	83 (314)	10,065 (708)	165 (625)	8,415 (592)	330 (1249)	4,210 (296)	495 (1874)	2,805 (197)	545 (2063)	2,550 (179)
5 (127.0)	2.04 (7.7)	102 (386)	8,150 (573)	204 (772)	6,805 (478)	408 (1544)	3,405 (239)	612 (2316)	2,270 (160)	673 (2547)	2,065 (145)
5-1/2 (139.7)	2.47 (9.4)	124 (469)	6,740 (474)	247 (935)	5,620 (395)	494 (1870)	2,810 (198)	741 (2805)	1,875 (132)	815 (3085)	1,705 (120)
5-3/4 (146.1)	2.70 (10.2)	135 (511)	6,165 (433)	270 (1022)	5,145 (362)	540 (2044)	2,570 (3066)	810 (3066)	1,715 (121)	891 (3372)	1,560 (110)
6 (152.4)	2.94 (11.1)	147 (556)	5,660 (398)	294 (1113)	4,725 (332)	588 (2226)	2,360 (166)	882 (3338)	1,575 (111)	970 (3671)	1,430 (101)
INPUT POWER: BHP (Kw)		540 (403)		900 (671)		900 (671)		900 (671)		900 (671)	

1 Based on 90% ME and 100% VE - Intermittent Service Only.
 2 For applications demanding pressures over 15,000 psi, contact Weir SPM Engineering.
 Height.....43-1/2" (1,105 mm)
 Weight Dry (Approx.).....8,000# (3,629 kg)

TWS 1300



APPLICATIONS: Acid-frac, fracturing, frac-pack.

Rated Max. Brake HP.....1,300 BHP (969 Kw)
 Maximum Rod Load.....200,000 Lbs. (90,720 kg)
 Stroke Length.....8" (203.2 mm)
 Gear Ratio.....7.0:1
 Length.....89-3/4" (2,280 mm)
 Width.....59-3/4" (1,518 mm)
 Height.....44-1/4" (1,124 mm)
 Weight Dry (Approx.).....11,550# (5,216 kg)

TWS 1300 Performance Data ^{1, 2}

PLUNGER DIAMETER	OUTPUT PER REV	DISPLACEMENT AT PUMP STROKES PER MINUTE / PINION RPM									
		50 / 350		100 / 700		200 / 1400		250 / 1750		330 / 2100	
in (mm)	gal/rev (liter/rev)	gpm (lpm)	psi (kg/cm ²)	gpm (lpm)	psi (kg/cm ²)	gpm (lpm)	psi (kg/cm ²)	gpm (lpm)	psi (kg/cm ²)	gpm (lpm)	psi (kg/cm ²)
3 3/4 (95.3)	1.15 (4.4)	58 (220)	18,115 (1273)	115 (435)	18,108 (1276)	230 (871)	8,720 (613)	288 (1090)	6,965 (490)	345 (1306)	5,815 (409)
4 (101.6)	1.30 (4.9)	65 (246)	15,925 (1120)	130 (492)	15,430 (1085)	260 (984)	7,715 (542)	325 (1230)	6,170 (434)	390 (1476)	5,145 (362)
4 1/2 (114.3)	1.65 (6.3)	83 (314)	12,580 (884)	165 (625)	12,155 (854)	330 (1249)	6,080 (427)	413 (1563)	4,855 (341)	495 (1874)	4,502 (285)
5 (127.0)	2.04 (7.7)	102 (386)	10,190 (722)	204 (772)	9,830 (691)	408 (1544)	4,915 (346)	510 (1930)	3,935 (277)	612 (2316)	3,275 (230)
5 1/2 (139.7)	2.47 (9.4)	124 (469)	8,420 (592)	247 (935)	8,120 (571)	494 (1870)	4,060 (285)	618 (2339)	3,245 (228)	741 (2805)	2,705 (190)
5 3/4 (146.1)	2.70 (10.2)	135 (511)	7,705 (542)	270 (1022)	7,430 (522)	588 (2044)	3,413 (2555)	675 (2509)	2,970 (209)	810 (3066)	2,475 (174)
6 (152.4)	2.94 (11.1)	147 (556)	7,075 (497)	294 (1113)	6,820 (479)	588 (2226)	3,410 (240)	735 (2782)	2,730 (192)	882 (3338)	2,275 (160)
6 1/2 (165.1)	3.45 (13.1)	173 (655)	6,030 (424)	345 (1306)	5,815 (409)	690 (2612)	2,905 (204)	863 (3266)	2,325 (163)	1,035 (3917)	1,940 (136)
6 3/4 (171.5)	3.72 (14.1)	186 (704)	5,590 (393)	372 (1408)	5,390 (379)	744 (2816)	2,695 (189)	930 (3520)	2,155 (151)	1,116 (4224)	1,795 (120)
7 (177.8)	4.00 (15.1)	200 (757)	5,200 (366)	400 (1514)	5,015 (353)	800 (3028)	2,505 (176)	1,000 (3785)	2,005 (141)	1,200 (4542)	1,177 (117)
7 1/2 (190.5)	4.59 (17.4)	230 (871)	4,530 (318)	459 (1737)	4,370 (307)	918 (3475)	2,185 (154)	1,148 (4345)	1,745 (123)	1,377 (5212)	1,455 (102)
INPUT POWER: BHP (Kw)		675 (503)		1300 (969)		1300 (969)		1300 (969)		1300 (969)	

1 Based on 90% ME and 100% VE - Intermittent Service Only.
 2 For applications demanding pressures over 15,000 psi, contact Weir SPM Engineering.

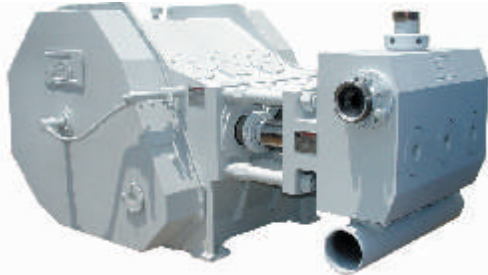
Pump dimensions are approximate. For full detailed drawings, please contact Weir SPM Engineering.

Weir SPM



Additional Intermittent Duty Pumps & Extended Duty Pumps

TWS 1600 LW



APPLICATIONS: Acid-frac, fracturing, frac-pack.

Rated Max. Brake HP.....1,600 BHP (1,193 Kw)
 Maximum Rod Load.....200,000 Lbs. (90,729 kg)
 Stroke Length.....8" (203.2 mm)
 Gear Ratio.....6.353:1
 Length.....84-3/4" (2,153 mm)
 Width.....53-7/8" (1,369 mm)
 Height.....43-3/8" (1,102 mm)
 Weight Dry (Approx.).....8,750# (3,970 kg)

TWS 1600 LW Performance Data ^{1, 2}

PLUNGER DIAMETER	OUTPUT PER REV	DISPLACEMENT AT PUMP STROKES PER MINUTE / PINION RPM									
		75 / 476		115 / 731		200 / 1271		300 / 1906		330 / 2100	
in (mm)	gal/rev (liter/rev)	gpm (lpm)	psi (kg/cm ²)	gpm (lpm)	psi (kg/cm ²)	gpm (lpm)	psi (kg/cm ²)	gpm (lpm)	psi (kg/cm ²)	gpm (lpm)	psi (kg/cm ²)
3 3/4 (95.3)	1.15 (4.4)	86 (326)	18,115 (1273)	132 (500)	18,115 (1273)	230 (871)	10,735 (755)	345 (1306)	7,155 (503)	380 (1438)	6,495 (457)
4 (101.6)	1.30 (4.9)	98 (371)	15,925 (1120)	150 (568)	15,925 (1120)	260 (984)	9,495 (667)	390 (1476)	6,330 (445)	429 (1624)	5,755 (405)
4 1/2 (114.3)	1.65 (6.3)	124 (469)	12,580 (884)	190 (719)	12,580 (884)	330 (1249)	7,480 (526)	495 (1874)	4,985 (350)	545 (2063)	4,530 (318)
5 (127.0)	2.04 (7.7)	153 (579)	10,190 (716)	235 (889)	10,190 (716)	408 (1544)	6,050 (425)	612 (2316)	4,035 (284)	673 (2547)	3,670 (258)
5 1/2 (139.7)	2.47 (9.4)	185 (700)	8,420 (592)	284 (1075)	8,420 (592)	494 (1870)	5,000 (352)	741 (2805)	3,330 (234)	815 (3085)	3,030 (213)
5 3/4 (146.1)	2.70 (10.2)	203 (768)	7,705 (542)	311 (1177)	7,705 (542)	540 (2044)	4,570 (321)	810 (3066)	3,050 (214)	891 (3372)	2,770 (195)
6 (152.4)	2.94 (11.1)	221 (836)	7,075 (497)	338 (1279)	7,075 (497)	588 (2226)	4,200 (295)	882 (3338)	2,800 (197)	970 (3671)	2,545 (179)
6 1/2 (165.1)	3.45 (13.1)	259 (980)	6,030 (424)	397 (1503)	6,030 (424)	690 (2612)	3,580 (252)	1,035 (3917)	2,385 (168)	1,139 (4311)	2,170 (153)
INPUT POWER: BHP (Kw)		1012 (755)		1550 (1156)		1600 (1193)		1600 (1193)		1600 (1193)	

¹ Based on 90% ME and 100% VE - Intermittent Service Only.
² For applications demanding pressures over 15,000 psi, contact Weir SPM Engineering.

Extended Duty Pumps

THB 175



APPLICATIONS: Reverse circulation, waterblasting, drill cuttings re-injection.

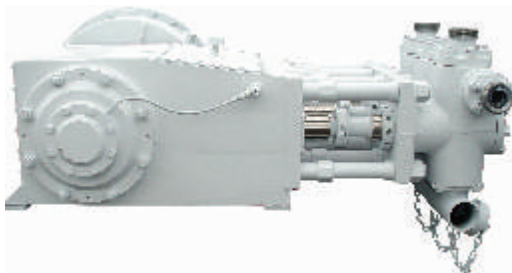
Rated Max. Brake HP.....175 BHP (130 Kw)
 Maximum Rod Load.....24,540 Lbs. (11,131 kg)
 Stroke Length.....5" (127 mm)
 Gear Ratio.....4.44:1
 Length.....59" (1,499 mm)
 Width.....45" (1,143 mm)
 Height.....26" (660 mm)
 Weight Dry (Approx.).....4,070# (1,692 kg)

THB 175 Performance Data*

PLUNGER DIAMETER	DISPLACEMENT PER REV	DISPLACEMENT AT PUMP STROKES PER MINUTE / PINION RPM									
		55 / 244		100 / 444		170 / 755		270 / 1200		405 / 1800	
in (mm)	gal/rev (liter/rev)	gpm (lpm)	psi (kg/cm ²)	gpm (lpm)	psi (kg/cm ²)	gpm (lpm)	psi (kg/cm ²)	gpm (lpm)	psi (kg/cm ²)	gpm (lpm)	psi (kg/cm ²)
1-3/4 (44.5)	.156 (0.6)	9 (34)	10,202 (716)	16 (61)	10,202 (717)	27 (102)	10,202 (717)	42 (152)	6,429 (452)	63 (238)	4,286 (301)
2 (50.8)	.204 (0.8)	11 (42)	7,811 (549)	20 (76)	7,811 (549)	35 (132)	7,811 (549)	55 (208)	4,910 (345)	83 (314)	3,253 (229)
2-1/4 (57.2)	.258 (1.0)	14 (53)	6,172 (434)	26 (98)	6,172 (434)	44 (167)	6,172 (434)	70 (265)	3,858 (271)	104 (394)	2,596 (182)
2-1/2 (63.5)	.319 (1.2)	18 (68)	5,000 (352)	32 (121)	5,000 (352)	54 (204)	5,000 (352)	86 (326)	3,140 (221)	129 (488)	2,093 (147)
2-3/4 (69.9)	.386 (1.5)	21 (79)	4,130 (290)	39 (148)	4,130 (290)	66 (250)	4,130 (290)	104 (394)	2,596 (182)	156 (590)	1,731 (122)
3 (76.2)	.459 (1.7)	25 (95)	3,470 (244)	46 (174)	3,470 (244)	78 (295)	3,470 (244)	124 (469)	2,178 (153)	186 (704)	1,452 (102)
3-1/2 (88.9)	.625 (2.4)	34 (129)	2,550 (179)	63 (238)	2,550 (179)	106 (401)	2,550 (179)	169 (640)	1,598 (112)	253 (958)	1,067 (75)
3-3/4 (95.3)	.717 (2.7)	39 (148)	2,222 (156)	72 (273)	2,222 (156)	122 (462)	2,222 (156)	194 (734)	1,392 (98)	290 (1098)	931 (65)
4 (101.6)	.816 (3.1)	45 (170)	1,950 (137)	82 (310)	1,950 (137)	139 (526)	1,950 (137)	220 (833)	1,227 (86)	330 (1249)	818 (58)
INPUT POWER: BHP (Kw)		57 (43)		103 (77)		175 (130)		175 (130)		175 (130)	

*Based on 90% ME and 100% VE - Extended Service Only.

THB 225



Rated Max. Brake HP.....225 BHP (168 Kw)
 Maximum Rod Load.....24,540 Lbs. (11,131 kg)
 Stroke Length.....6" (152.4 mm)
 Gear Ratio.....4.61:1
 Length.....74-1/4" (1,810 mm)
 Width.....45-3/8" (1,153 mm)
 Height.....26-1/2" (674 mm)
 Weight Dry (Approx.).....4,500# (2,041 kg)

THB 225 Performance Data*

PLUNGER DIAMETER	OUTPUT PER REV	DISPLACEMENT AT PUMP STROKES PER MINUTE / PINION RPM							
		75 / 346		100 / 461		125 / 576		185 / 853	
in (mm)	gal/rev (liter/rev)	gpm (lpm)	psi (kg/cm ²)	gpm (lpm)	psi (kg/cm ²)	gpm (lpm)	psi (kg/cm ²)	gpm (lpm)	psi (kg/cm ²)
2 1/2 (63.5)	.38 (1.4)	29 (110)	5,000 (352)	38 (144)	5,000 (352)	48 (182)	5,000 (352)	70 (265)	5,000 (352)
2 3/4 (69.9)	.46 (1.7)	35 (132)	4,130 (290)	46 (174)	4,130 (290)	58 (220)	4,130 (290)	85 (322)	4,130 (290)
3 (76.2)	.55 (2.1)	41 (155)	3,470 (244)	55 (208)	3,470 (244)	69 (261)	3,470 (244)	102 (386)	3,470 (244)
3 1/2 (88.9)	.75 (2.8)	56 (212)	2,550 (179)	75 (284)	2,550 (179)	94 (356)	2,550 (179)	139 (526)	2,550 (179)
4 (101.6)	.98 (3.7)	74 (280)	1,950 (137)	98 (371)	1,950 (137)	123 (466)	1,950 (137)	181 (685)	1,950 (137)
4 1/2 (114.3)	1.24 (4.7)	93 (352)	1,540 (108)	124 (469)	1,540 (108)	155 (587)	1,540 (108)	229 (867)	1,540 (108)
INPUT POWER: BHP (Kw)		93 (69)		124 (92)		155 (116)		225 (168)	

* Based on 90% ME and 100% VE - Extended Service Only.

APPLICATIONS: Underbalanced CT drilling, industrial grouting, waterblasting, drill cuttings re-injection.

Pump dimensions are approximate. For full detailed drawings, please contact Weir SPM Engineering.