



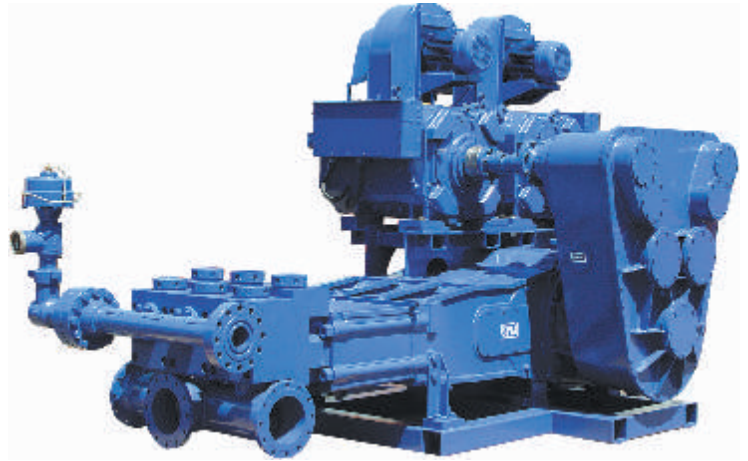
Full Bore Unloading Valve

Excellent
Oil & Gas
Solutions



Providing over-pressure protection for flow lines during drilling operations.





The Full Bore Unloading Valve is shown equipped with Weir SPM's TMP 1650 Mud Pump.

The Full Bore Unloading Valve increases safety on drilling sites through over-pressure protection.

Nitrogen Actuated Full Bore Unloading Valve

The Full Bore Unloading Valve provides over-pressure protection for reciprocating pumps, treating lines, pressure vessels, and other equipment operating under high pressure-high flow conditions. Compact and simple to operate, the valve is direct acting, relying on the system's hydraulic pressure to overcome a preset nitrogen gas force to relieve.

The Full Bore Unloading Valve is available in 3" and 4" sizes in pressure ratings of 6,000, 10,000 and 15,000 psi.

The Full Bore Unloading Valve operates differently than other relief valves by opening fully when sequenced. This causes the back pressure to drop drastically once it opens. Consequently very large amounts of flow can pass through this valve. This valve is suitable for the drilling industry since they prefer an immediate shutdown of pressure once the threshold is exceeded.

The valve exhibits a high degree of accuracy and repeatability, and requires a nitrogen or compressed air source for operation.

An estimated value of flow rate for this valve:

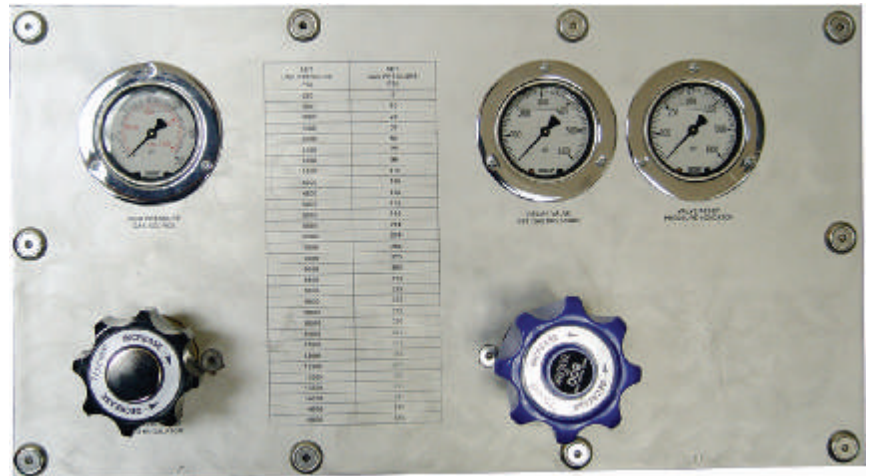
3" Unloading Valve 1000 GPM (or more)
4" Unloading Valve 1000 GPM (or more)

The Full Bore Unloading Valve has been utilized in the field for several years and has performed with great

results. As with all of Weir SPM's flow control products, this valve is manufactured under strict quality standards, including ISO 9001 and DNV standards, and each valve is pressure tested before being delivered to the customer to ensure its proper working specifications.

Remote Control Panel

To maximize safety, Weir SPM's Remote Control Panel should be utilized along with the Full Bore Unloading Valve. The Remote Control Panel regulates the flow of rig air or nitrogen to the relief valve and allows the operator to change pressure relief settings with the turn of a knob at a safe distance from the flow line. The Remote Control Panel is also engraved with a quick reference chart for easy adjustment.



Weir SPM

7601 Wyatt Drive
Fort Worth
TX 76108
USA

Tel: (817) 246 2461
Fax (817) 246 6324

www.weiroilandgas.com

