



Excellent
Oil & Gas
Solutions



Weir SPM Safety Lifting Clamps

Safety Lifting Clamps provide the operator an engineered tool to safely lift iron pipe around a frac site. The use of Weir SPM's Safety Lifting Clamps will replace the unsafe procedure of using only slings to lift and transport long lengths of pipe, which is susceptible to unpredictable movement or shifting of iron and causes a greater risk of accidents to occur on site.

Engineered design per industry standards with each clamp assembly certified prior to product shipping.



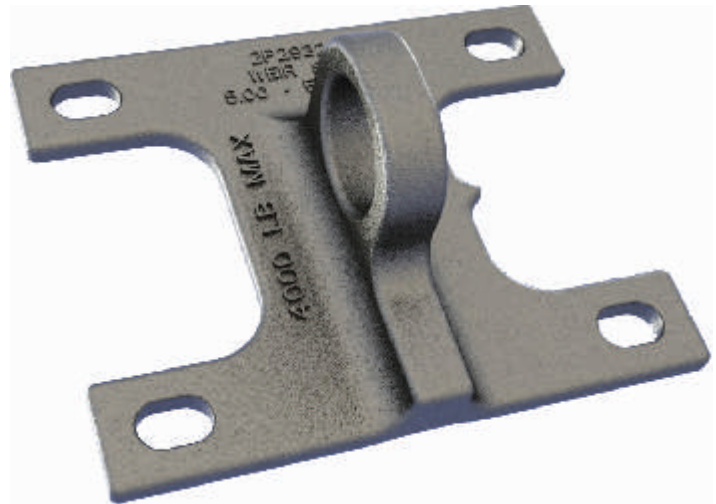
The Safety Lifting Clamp is a simple to use tool to safely lift long lengths of pipe on site by ensuring the lift occurs at the center of gravity of the pipe, making movement easier, more consistent and most importantly safe.

Safety Lifting Clamps are tested to meet ASME B30.20-2010 standards and compliant with NACE MRO0175. Weir SPM offers 4 different assemblies to fit pipe ranging from 3.50" to 6.50" outside diameter.

Each clamp component is fully traceable with the manufacturer's name, heat code, and working load limit; allowing for 100% traceability of the Safety Lifting Clamp Assembly. Identification with traceability promotes a safer environment and facilitates an improved way to keep track of maintenance and inspection.

Increase safety on a job site at an inexpensive cost by investing in the Weir SPM Safety Lifting Clamps.

Proper installation and procedures can be found in the Safety Lifting Clamps Operation and Maintenance Instructions Manual. You may also contact your local Weir SPM Service Center for further details.



Benefits for operators:

- Increased employee efficiency
- An ideal solution for lifting loads where head room is critical
- Added stability to lift
- Complies with OSHA Section 1926.251 (a)(4)
- Every Clamp Assembly is pull tested up to 125% its rated load
- Designed and manufactured to ASME B30.20 - 2010; the Safety Lifting Clamps are completely traceable
- Lifting capacity verified with destructive testing
- A safe working environment by preventing accidents
- Weir SPM Engineered design
- Compatible with Weir SPM and all major suppliers (3" & 4" Iron)

Weir SPM

7601 Wyatt Drive
Fort Worth
TX 76108
USA

Tel: (817) 246 2461
Fax (817) 246 6324

www.weiroilandgas.com

